



Jenny Pockley | Nick Archer

CHRISTINE
PARK
GALLERY

ART [ASPEN

July 25 - 28 2019
ASPEN ICE GARDEN
Booth A3

Opening Night Preview
Thursday, July 25, 5 - 9 pm

General Admission
Friday, July 26, 12 - 7 pm
Saturday, July 27, 12 - 7 pm
Sunday, July 28, 12 - 5 pm

Jenny Pockley

Born in the UK in 1972, Jenny Pockley gained a post graduate diploma from the Royal Academy Schools, London in 1997 after studying for a BA(Hons) Fine Art Degree at KIAD at Canterbury. She exhibits with GBS Fine Art in London and was a Gallery Artist at Sarah Myerscough Fine Art, London for 15 years. She has exhibited extensively in London but also has displayed works in Bath, Paris, New York, San Francisco and Toronto. She has gained numerous commissions, both private and corporate, including for the Waldorf Astoria group and Tiffany's. She now lives and works in Rye, East Sussex.



Jenny Pockley in her studio in Rye, July 2019.



Jenny Pockley
Alpine Peak, 2019
Signed, dated and titled on verso
Oil on canvas
53 1/8 x 47 1/4 in
135 x 120 cm
JP007



Alpine Peak, 2019
(Detail)



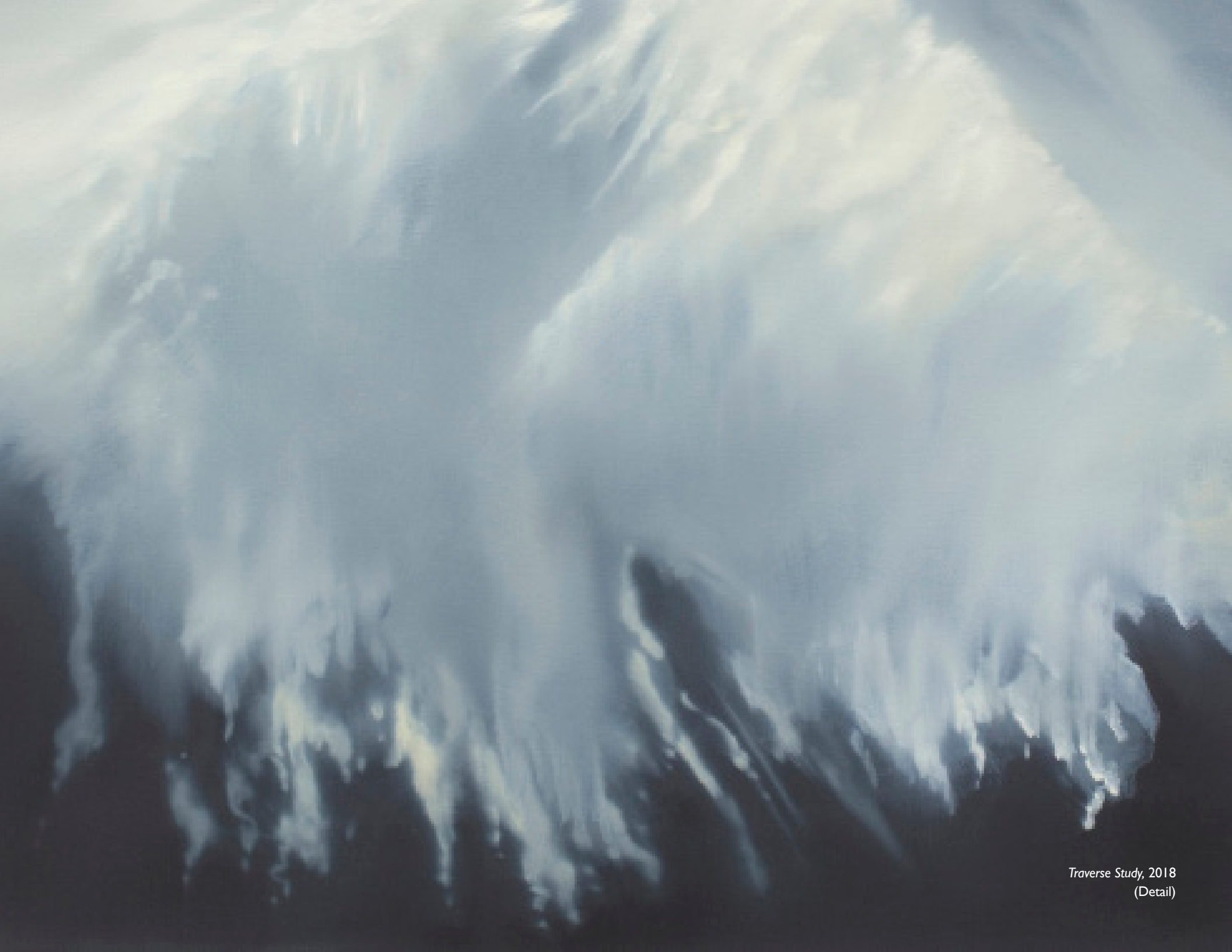
Alpine Peak, 2019
(Detail)

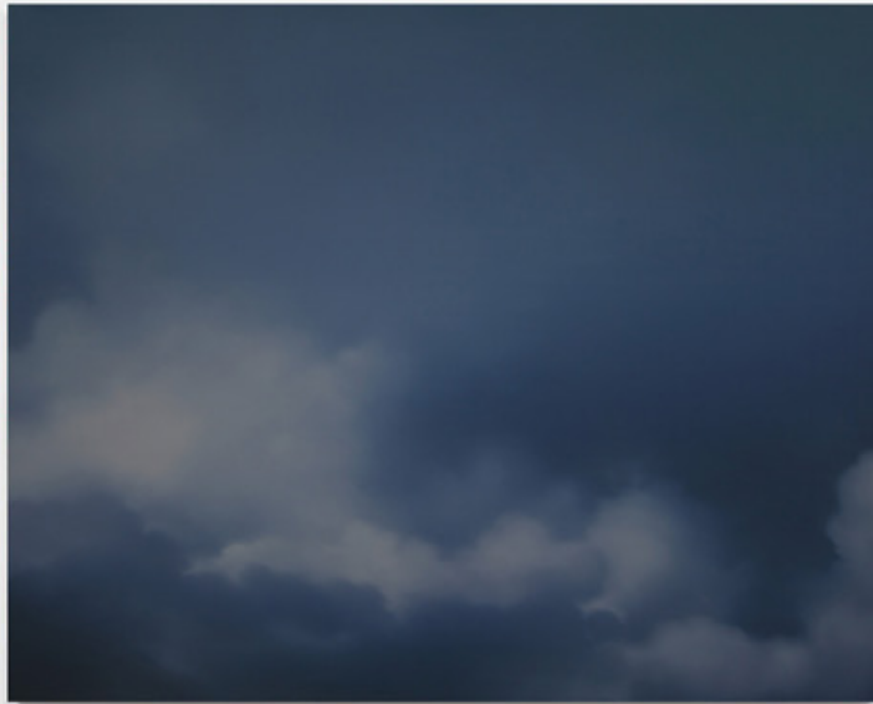


Jenny Pockley
Traverse Study, 2018
Signed, dated and titled on verso
Oil on canvas
19 3/4h x 15 3/4w in
50h x 40w cm
JP003



Traverse Study, 2018
(Detail)

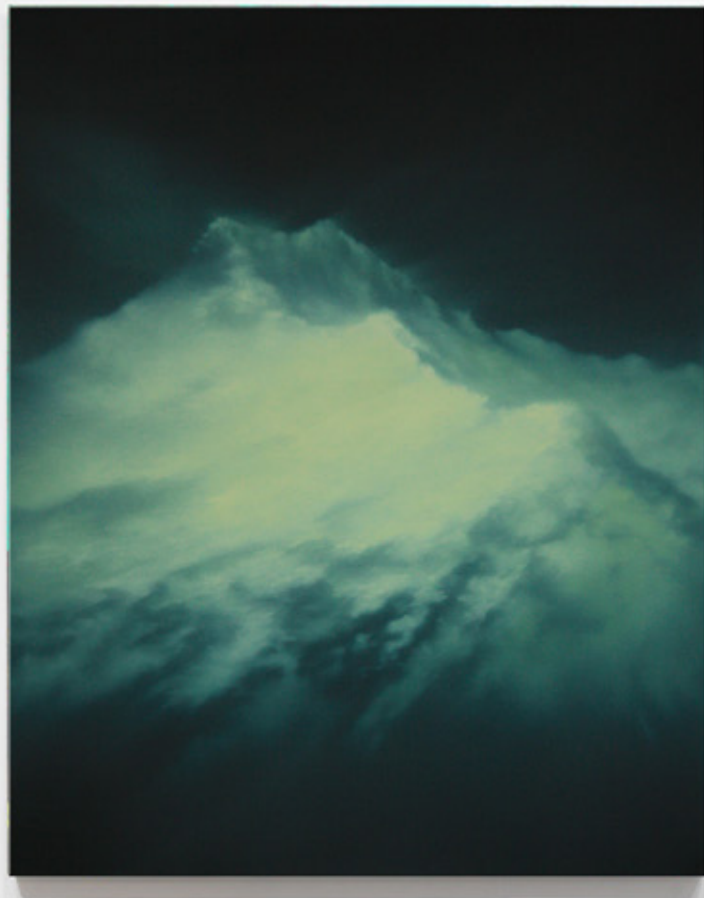




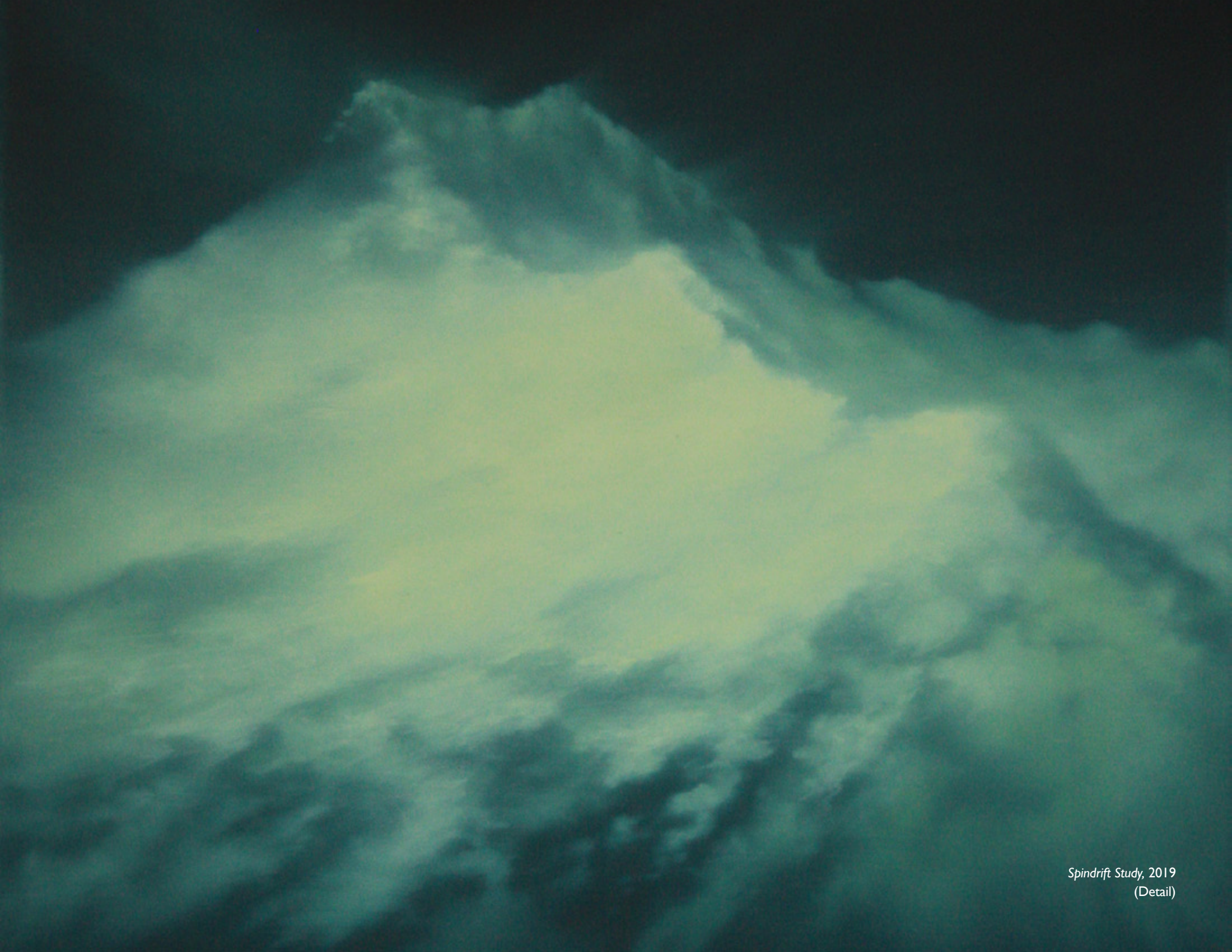
Jenny Pockley
Cloud Study Opal, 2019
Signed, dated and titled on verso
Oil on canvas
15 3/4h x 19 3/4w in
40h x 50w cm
JP008



Cloud Study Opal, 2019
(Detail)



Jenny Pockley
Spindrift Study, 2019
Signed, dated and titled on verso
Oil on canvas
19 3/4h x 15 3/4w in
50h x 40w cm
JP005



Spindrift Study, 2019
(Detail)



Jenny Pockley

Tidal, 2019

Signed, dated and titled on verso

Oil on canvas

15 3/4h x 19 3/4w in

40h x 50w cm

JP004



Tidal, 2019
(Detail)



Jenny Pockley

Cap, 2019

Signed, dated and titled on verso

Oil on canvas

15 3/4h x 19 3/4w in

40h x 50w cm

JP006





Jenny Pockley
Cloud Study Grey, 2018
Signed, dated and titled on verso
Oil on canvas
15 3/4h x 19 3/4w in
40h x 50w cm
JP002



Cloud Study Grey, 2018
(Detail)

Nick Archer

Nick Archer lives and works in East Sussex, England. He studied at the Royal Academy Schools in London. He won several awards after leaving the Royal Academy, including first prize at the Hunting Art Prize, commended at the BP Portrait Award and the Figure Painting Award at the Discerning Eye.

He has exhibited extensively in the UK and Europe. He also has been featured in museum exhibitions including the National Portrait Gallery (London) and the Wandsworth Museum (London). In 2012 he had a solo exhibition at the Maison de la Culture de Metz (Metz) and the Hastings Museum (East Sussex). His works are in several international private, corporate and public collections, including the Satellite collection of the Hermitage Museum (Moscow), the Historic Royal Palaces at the Tower of London, and the Al-Sabah Family Collection (Kuwait). Christine Park Gallery presented his new body of works in a solo booth at Untitled San Francisco 2019 in January. He also participated in Art Fair Tokyo 2019 in March. Christine Park Gallery expects to host the gallery's first solo exhibition with the artist in autumn 2019 in New York.



Nick Archer in his studio in Rye, August 2017.



Nick Archer

Ice, 2014

Signed and dated on verso

Oil and acrylic on black sandpaper mounted on aluminium

46 1/2h x 55 1/8w in

118h x 140w cm

NA001



Ice, 2014
(Detail)



Nick Archer

A Room With A View, 2018

Signed and dated on verso

Oil and acrylic on black sandpaper mounted on aluminium

48 1/8h x 54 3/8w in

122h x 138w cm

NA002



A Room With A View 2018
(Detail)



Nick Archer
Static, 2019
Signed and dated on verso
Oil and acrylic on canvas
72 1/8h x 59 7/8w in
183h x 152w cm
NA006



Static, 2018
(Detail)



Nick Archer
Tree 1, 2019
Signed on verso
Acrylic on canvas
27 1/2h x 19 3/4w in
70h x 50w cm
NA022



Tree I, 2019
(Detail)



Nick Archer
Tree 2, 2019
Signed on verso
Acrylic on canvas
27 1/2h x 19 3/4w in
70h x 50w cm
NA023



Tree 2, 2019
(Detail)



Nick Archer
The Flood, 2014
Signed and dated on verso
Oil on copper
17 3/4h x 11 3/4w in
45h x 30w cm
NA008



The Flood, 2014
(Detail)



Nick Archer
Oak, 2018
Signed and dated on verso
Oil on copper
17 3/4h x 11 3/4w in
45h x 30w cm
NA020



Oak, 2018
(Detail)



Jenny Pockley, Studio view I - work in progress, Rye, July 2019.



Jenny Pockley, Studio view II - work in progress, Rye, July 2019.



Nick Archer, Studio view I - work in progress, Rye, July 2019.



Nick Archer, Studio view II - work in progress, Rye, October 2018.

JENNY POCKLEY

Born in the UK in 1972. Lives and works in Rye, East Sussex.

EDUCATION

1994 - 1997 Royal Academy Schools, Post Graduate Diploma
1991 - 1994 Kent Institute of Art & Design, Canterbury, BA(Hons) Fine Art
1990 - 1991 Braintree College of Further Education, Foundation Course

SELECTED SOLO EXHIBITIONS

2019 *Jenny Pockley New Paintings*, Beaux Arts Bath, Bath
2017 *Jenny Pockley New Paintings*, Beaux Arts Bath, Bath
2016 *Cityscapes*, VJB arts, Gresham Street, London
2015 *Jenny Pockley*, VJB arts, Threadneedle Street, London
2014 *London's Story*, Sarah Myerscough Fine Art, London
2012 *Icons & Vistas*, Sarah Myerscough Fine Art, London
2010 *Taking Manhattan*, Sarah Myerscough Fine Art, London
2008 *Dreamscapes*, Sarah Myerscough Fine Art, London
2006 *Above The Thames*, Sarah Myerscough Fine Art, London
2005 *A City Observed*, Sarah Myerscough Fine Art, London
2004 *The End of the Pier*, Brighton Museum Café Gallery, Brighton
2003 *The End of the Pier*, Sarah Myerscough Fine Art, London
On The Road, Sarah Myerscough Fine Art, London
2000 *Unbounded Space*, Sarah Myerscough Fine Art, London

SELECTED GROUP EXHIBITIONS & ART FAIRS

2019 *Art Aspen 2019* presented by Christine Park Gallery, Aspen
FFS (Fair For Saatchi) 2019 presented by GBS Fine Art, London
Dallas Art Fair 2019 presented by Christine Park Gallery, Dallas
London Art Fair 2019 presented by GBS Fine Art, London
2018 *Verge*, VJB arts, Threadneedle Street, London
2017 - 2018 *London Art Fair*, Long & Ryle, London
2017 *Beyond The Sublime*, Gowen Contemporary, Geneva
Time, Memory and Landscape, Long & Ryle, London
2012 - 2014 *Art Paris*, Grand Palais, Sarah Myerscough Fine Art, Paris
2012 *London Now*, Sarah Myerscough Fine Art, London
2010 *New York City Art Fair*, Sarah Myerscough Fine Art, New York
2009 - 2012 *20/21 British Art Fair*, Royal College of Art, Sarah Myerscough Fine Art, London
2009 *London-Two Perspectives*, Sarah Myerscough Fine Art, London
2008 *Transcriptions*, Sarah Myerscough Fine Art, London

2007 *Equinox*, Sarah Myerscough Fine Art, London
Transcriptions, Sarah Myerscough Fine Art, London
2006 - 2008 *Toronto International Art Fair*, Toronto
2006 *Mixed Exhibition of British Artists*, Chelsea Gallery, San Francisco
2005 *Gibson Jessop Gallery*, Toronto
2002 - 2005 *Art London*, Chelsea, London
2002 *Cast Iron Gallery*, New York
Best of Art 2002, Sarah Myerscough Fine Art, London
2001 - 2014 *London Art Fair*, Sarah Myerscough Fine Art, London
2000 *Henry Moore Foundation*, Dean Clough Gallery, Leeds
Sarah Myerscough Fine Art, Whitechapel Art Gallery, London
1997 *Royal Academy Schools Post Graduate Exhibition*, London
1996 *Piccadilly Gallery*, London
1995 - 1997 *Royal Academy Summer Exhibition*, London
1994 - 1997 *Royal Academy Schools Premiums Exhibition*, London
1994 *Fresh Art '94*, London
Kent Institute of Art & Design, Degree Exhibition

AWARDS, SCHOLARSHIPS & COMMISSIONS

2015 *Lynn-Painter Stainers Exhibition* – painting accepted for exhibition
Discerning Eye – painting accepted for exhibition
2011 *Discerning Eye* – painting accepted for exhibition
2010 - 2017 *International Corporate commissions*
2001 *Hunting Art Prizes* – painting accepted for exhibition
1997 - 2017 *Private commissions* London, Scotland, New York and Europe
1997 *Landseer Scholarship*
The Lancet 175th Anniversary Supplement
Chevron Calendar
1995 *David Murray Travel Scholarship*
1994 - 1997 *Leverhulme Trust Scholarships*
Worshipful Company of Painter/Stainers Bursary
1994 *Elizabeth Greenshields Foundation Award*
Kent Institute, First Prize for Painting

BIBLIOGRAPHY

2014 *Interview with Robert Elms*, BBC London

NICK ARCHER

Born in the UK in 1963. Lives and works in Rye, East Sussex.

EDUCATION

1996 - 1999 Royal Academy Schools, Postgraduate Diploma in Painting

1982 - 1985 Leeds Polytechnic BA (Hons)

1981 - 1982 Mid-Cheshire College Art Foundation Studies

SELECTED SOLO EXHIBITIONS & ART FAIRS

- 2019 *UNTITLED, San Francisco 2019* presented by Christine Park Gallery, San Francisco
- 2017 *The journey*, Long and Ryle, London
Beyond the Sublime, Gowen Contemporary, Geneva
- 2014 *Lost in Paradise*, Long & Ryle, London
Meurtrière Bleue, Gowen Contemporary, Geneva
- 2013 *Dystopie*, Galerie Hug, Paris
60 Threadneedle street, in association with Long & Ryle, London
- 2012 Maison de la Culture et des Loisirs, in association with Louise Alexander Gallery, Metz
- 2011 Louise Alexander Gallery, Porto Cervo
- 2009 Sarah Myerscough Fine Art, London
- 2008 Hastings Museum and Art Gallery, Hastings
- 2005 *Royal Overseas League*, London and Edinburgh
Sarah Myerscough Fine Art, London
- 2004 Beaux Arts Gallery, Bath
- 2002 Sarah Myerscough Fine Art, London
- 2000 Dean Clough Gallery, Halifax

SELECTED GROUP EXHIBITIONS & ART FAIRS

- 2019 *Art Aspen 2019* presented by Christine Park Gallery, Aspen
Royal Academy Summer Exhibition, London
FFS (Fair For Saatchi) 2019 presented by Long and Ryle, London
Dallas Art Fair 2019 presented by Christine Park Gallery, Dallas
Art Fair Tokyo 2019 presented by Christine Park Gallery, Tokyo
London Art Fair 2019 presented by Long and Ryle, London
- 2017 *Time Memory and Landscape*, Long & Ryle, London
Artgenève 2017 presented by Gowen Contemporary, Geneva
- 2016 *Art 16 Olympia* presented by Long & Ryle, London

- 2014 *6 Contemporary Painters*, Hastings Museum, Hastings
Art 14 Olympia presented by Long & Ryle, London
Art Paris presented by Louise Alexander Gallery, Paris
Arts Festival presented by Louise Alexander Gallery, Porto Cervo
- 2013 *Art Paris* presented by Louise Alexander Gallery, Paris
- 2012 CEAF Wandsworth Museum, London
Meltwater, Eagle Gallery, London
Art Paris presented by Louise Alexander Gallery, Paris
- 2011 *Arts Festival* presented by Louise Alexander Gallery, Porto Cervo
- 2010 *Art Paris* presented by Louise Alexander Gallery, Paris
- 2009 *Threadneedle Art Prize*, Mall Galleries, London
- 2006 *Contemporary British Art*, Chelsea Art Gallery, San Francisco
Arts Project Space, London Contemporary Art Fair, London
- 2004 *Arts Futures Exhibition*, Contemporary Art Society, London
- 2003 *Jerwood Drawing Prize*, Jerwood Space, London
- 2002 *BP Portrait Award*, National Portrait Gallery, London
- 2001 *Hunting Art Prizes*, Royal College of Art, London
Royal Academy Summer Exhibition, London
- 1999 *BP Portrait Award*, National Portrait Gallery, London
The Discerning Eye, Mall Galleries, London
Royal Academy Summer Exhibition, London
- 1998 *BP Portrait Award*, National Portrait Gallery, London
Royal Academy Summer Exhibition, London
- 1997 *Premiums Exhibition*, Sackler Galleries, Royal Academy, London
Royal Academy Summer Exhibition, London
- 1994 *Whitechapel Open*, Whitechapel Art Gallery, London

CAREER HISTORY & TEACHING EXPERIENCE

- 2001 - Present Part-time Lecturer, Heatherley School of Art, Chelsea, London
- 2005 Guest speaker on contemporary portraiture, National Portrait Gallery, London
- 1999 - 2000 Artist in Residence, London Business School, London
- 1997 - 1998 President of Students Union, RA Schools, London
- 1994 Visiting Lecturer in printmaking, Leeds Metropolitan University, Leeds
- 1991 Florence Trust, 10 Month Residency, London
- 1990 Cyprus College of Art, Larnaca, Cyprus
- 1987 St. Paul's Gallery, Artist in Residence, Leeds

AWARDS, PUBLICATIONS & COMMISSIONS

- 2012 Commissioned by the Historic Royal Palaces, Tower Bridge, London
2008 Winner of ING Fresh Eyes Competition
2006 Commissioned portraits for the Royal Family of Kuwait
2002 1st Prize, Hunting Art Prizes
1999 Cyril Sweett Award, Worshipful Company of Painter Stainers, for painting
Haite Travel Scholarship
1998 Commended BP Portrait Award, National Portrait Gallery, London
Discerning Eye Award for figure painting
Elizabeth Scott-Moore Watercolour Prize, RWS

COLLECTIONS

Satellite Collection, Hermitage Museum
People's Portraits, Girton College
London Business School
The Hurlingham Sports Club
Smith and Williamson Bank
Al-Sabah Family Collection
Historic Royal Palaces, Tower of London
Royal Overseas League, St. James's

BIBLIOGRAPHY

- 2009 Melanie Abrams, *Galleries Magazine*, June
2003 John Holden, *Galleries Magazine*, April
Sue Hubbard, *Forever England*, *Independent*, 8 April
Martin Gayford, Catalogue introduction, April
2000 Jay Merrick, *Reflections in a Darkling Eye*, *The Independent*, 14 March
1999 Martin Gayford, *Freudian Tendency*, *Daily Telegraph*, 30 June
Morgan Falconer, *Archer quietly hits the bullseye- yet again*, *Highbury and Islington Express*,
8 February
1998 William Packer, *Changing face of contest*, *Financial Times*, 7 July
Martin Gayford, *Choose from lively, quirky or accomplished*, *Daily Telegraph*, 22 July
Martin Gayford, *Painting in the rain*, *Daily Telegraph*, 30 September

ART] ASPEN

July 25 - 28 2019

ASPEN ICE GARDEN | Booth A3

Opening Night Preview

Thursday, July 25, 5 - 9 pm

General Admission

Friday, July 26, 12 - 7 pm

Saturday, July 27, 12 - 7 pm

Sunday, July 28, 12 - 5 pm

GALLERY 515 W 23rd St. New York, NY 10011

CONTACT www.christinepark.net | info@christinepark.net

IMAGES COURTESY OF Christine Park Gallery and the Artists

DESIGN BY Jiin Ahn

PUBLISHED BY Christine Park Gallery, New York, 2019

**CHRISTINE
PARK
GALLERY**