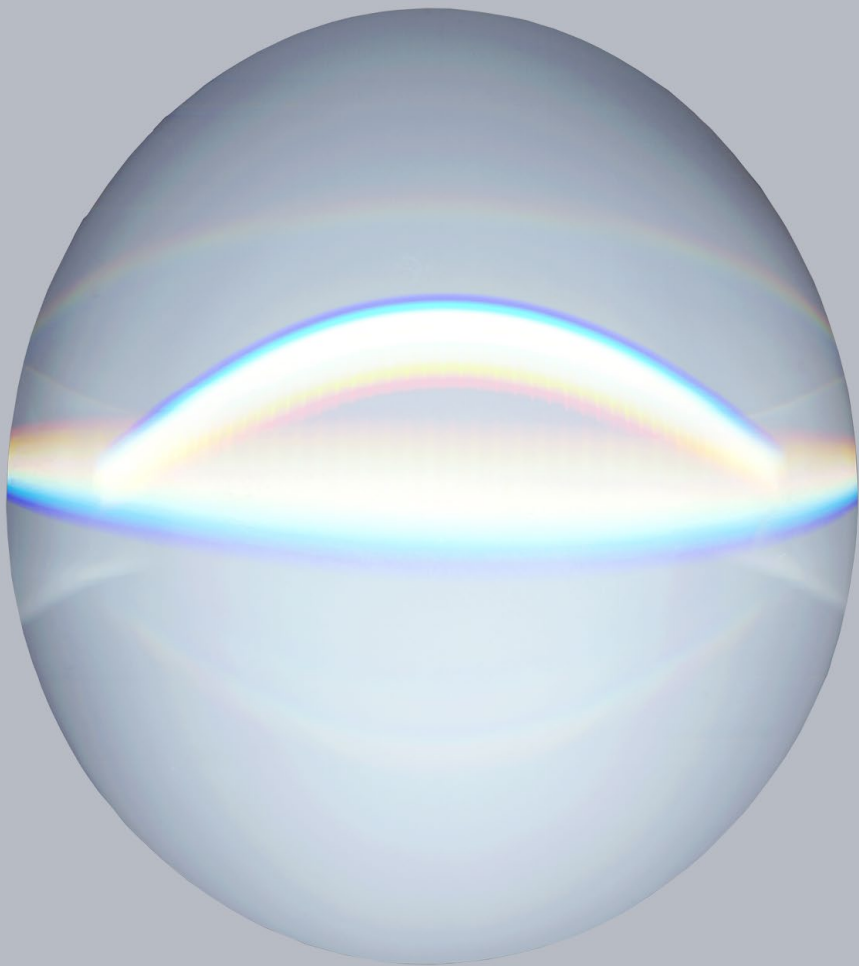




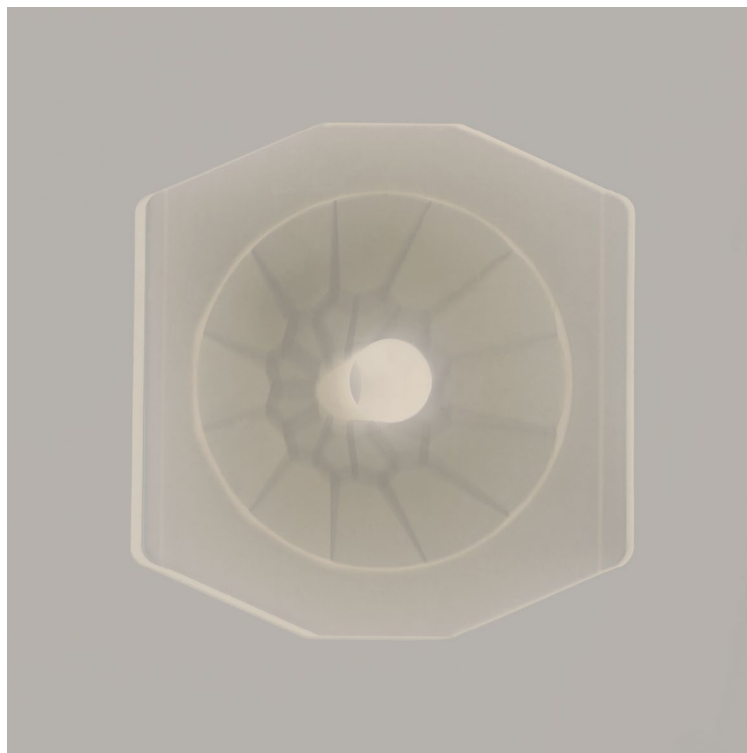
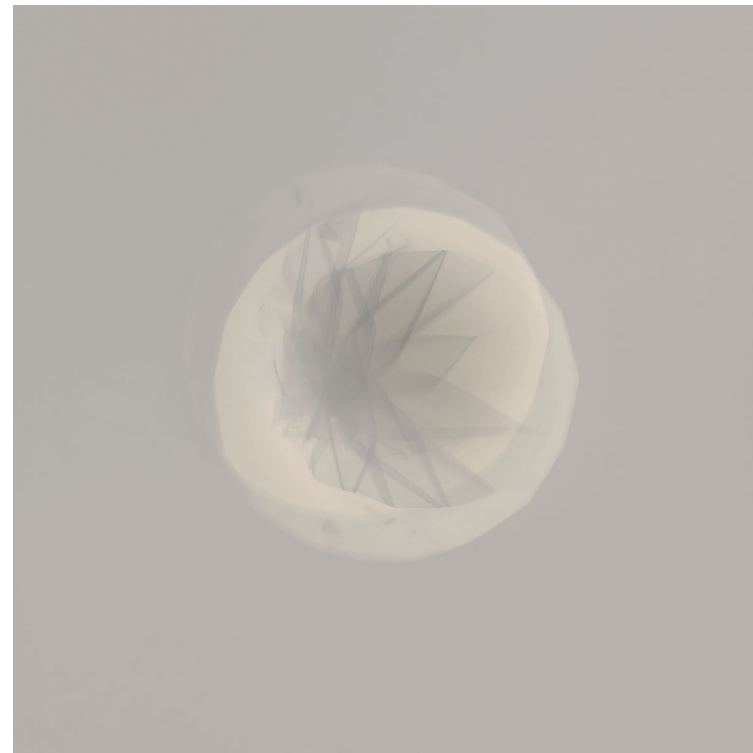
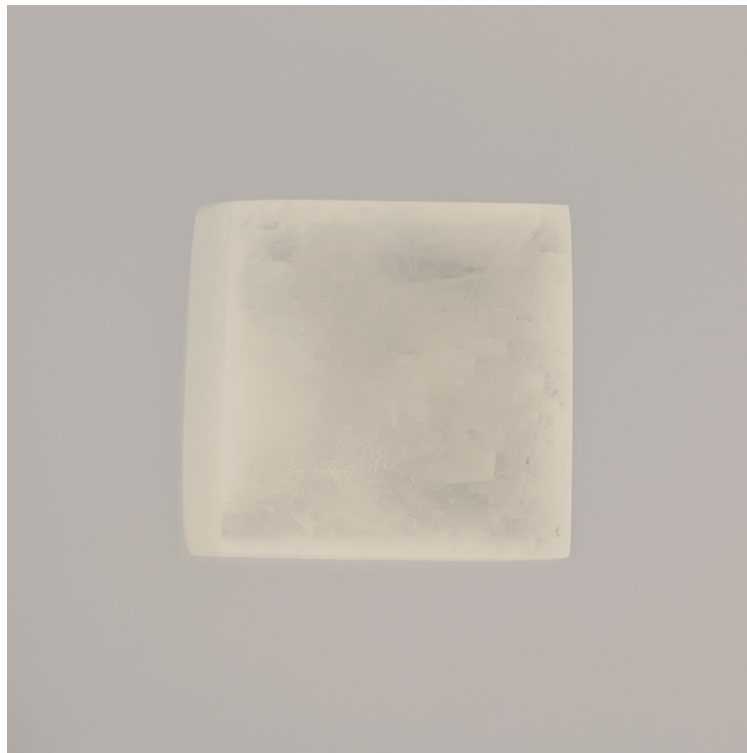
JESSICA RAYNER



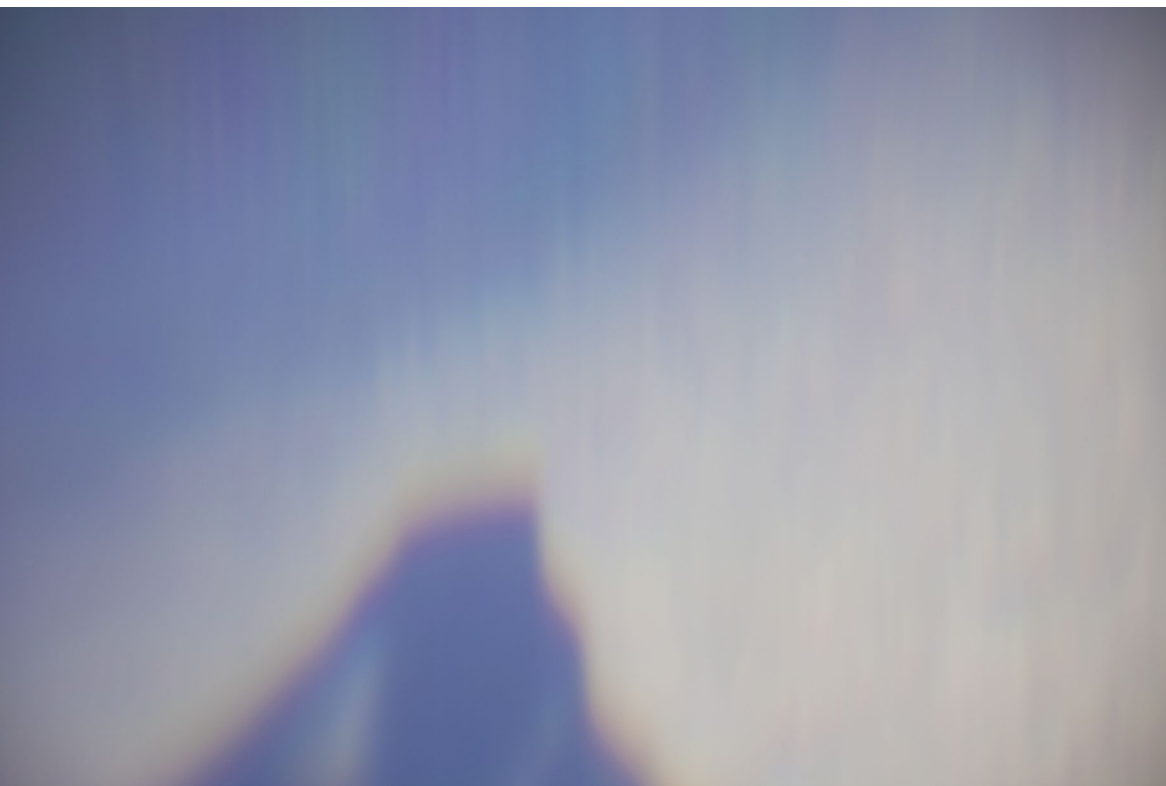
*Objektiv I*, 2015  
Archival digital print and etched glass, framed  
76 x 56 cm, Edition of 3 + 2 AP



*Objektiv II*, 2015  
Archival digital print and etched glass, framed  
76 x 56 cm, Edition of 3 + 2 AP



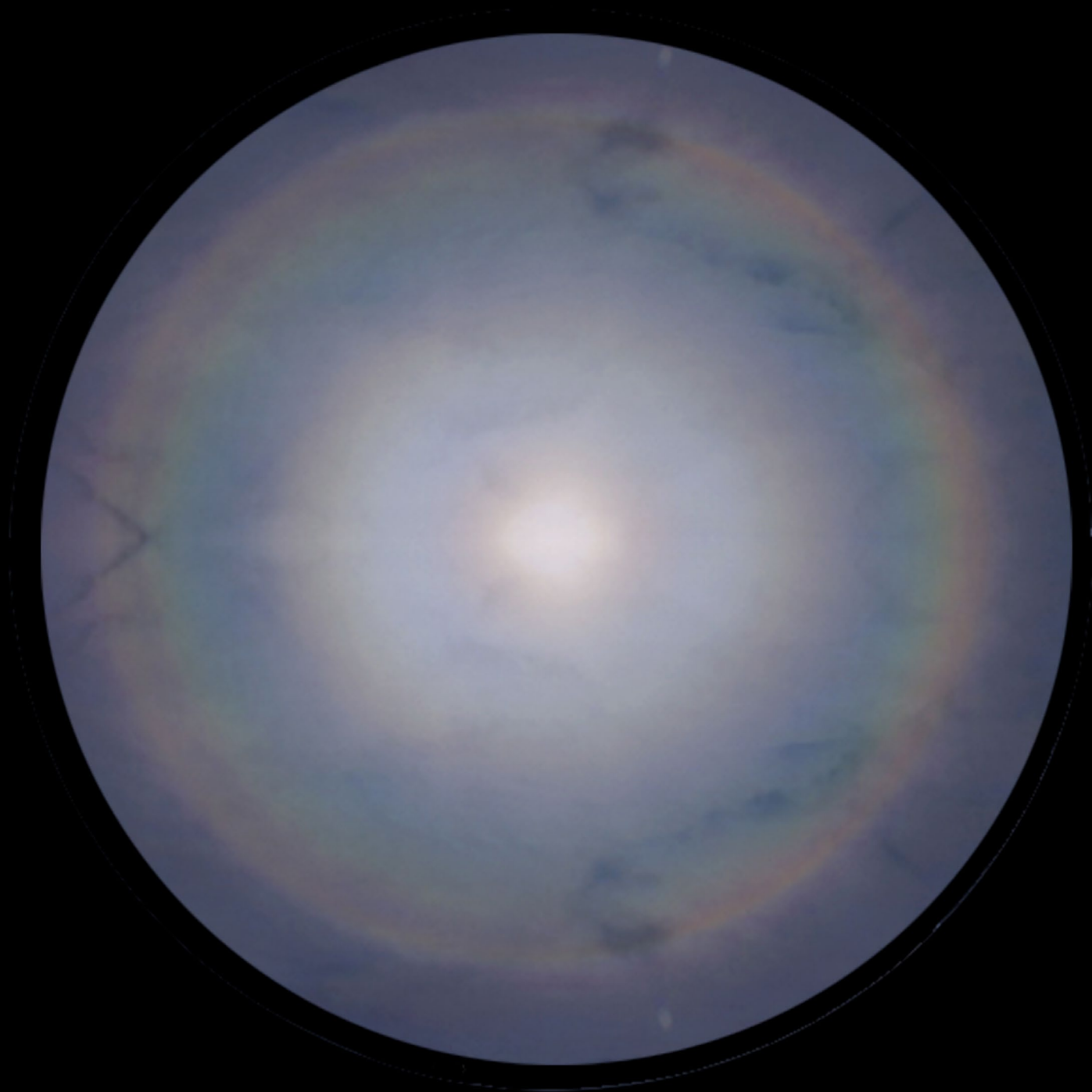
*Untitled I, II, III & IV (sun capture, 9th  
Aug, 12 o'clock, 20 minutes, gentle wind)  
(clockwise), 2016*  
Archival digital prints of sun prints, framed  
30 x 30 cm, Edition of 5 + 2 AP



*Optical Aberrations I* (top) & *Optical Aberrations II* (bottom), 2016  
Archival digital print, 22 x 28 cm (framed), Edition of 3 + 2 AP



*As Seen from Below the Horizon*, 2016  
Telescope mirror, steel, projector, plinth  
Plinth: 50 x 15 cm, Edition of 3 + 2 AP





*Solsten (Green)*, 2016  
Lightbox, 118 x 84 cm  
Edition of 2 + 2 AP



*Solsten (Blue)*, 2016  
Lightbox, 118 x 84 cm  
Edition of 2 + 2 AP

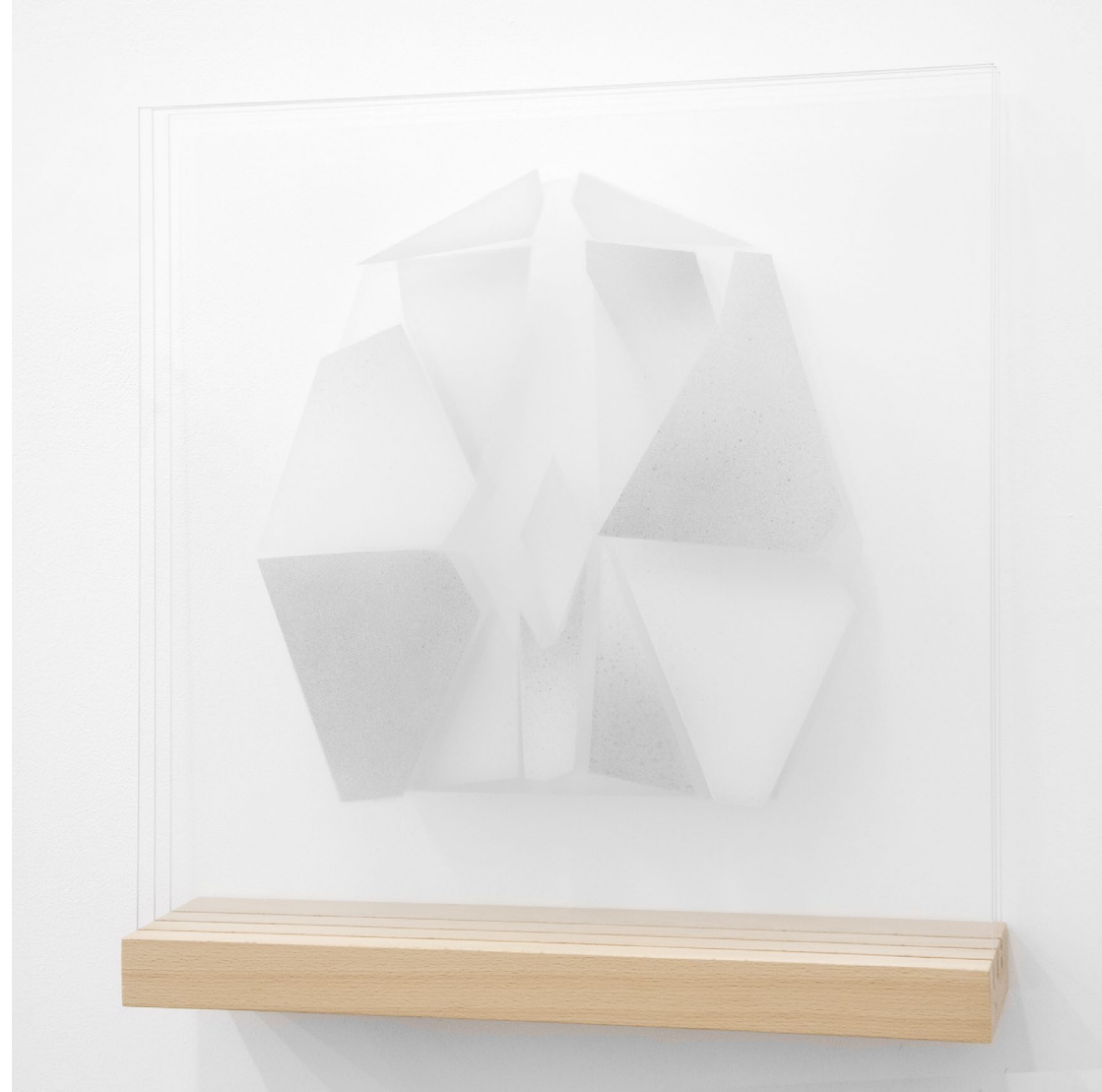




*Solsten (Yellow)*, 2016  
Lightbox, 118 x 84 cm  
Edition of 2 + 2 AP  
Detail



*Before Newton III*, 2016  
Spray paint, glass, beech shelf, 50 x 52 cm



*Before Newton II*, 2016  
Spray paint, glass, beech shelf, 50 x 52 cm





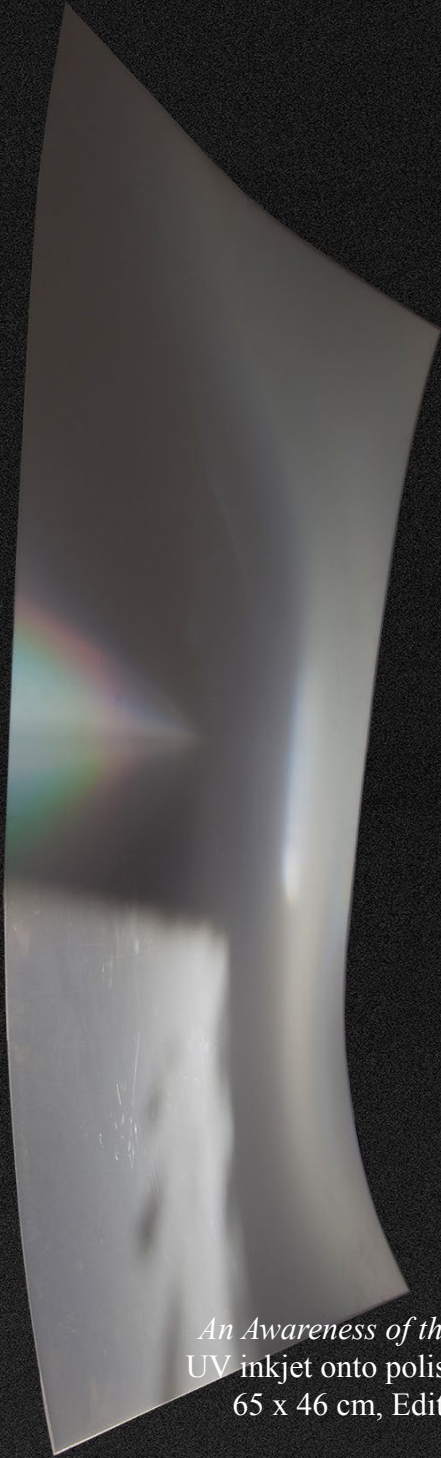
*Before Newton I, II & III*, 2016  
Spray paint, glass, beech shelf, 50 x 52 cm  
Installation View





*An Awareness of the Dark I*, 2016  
UV inkjet onto polished aluminium  
65 x 46 cm, Edition of 3 + 2 AP

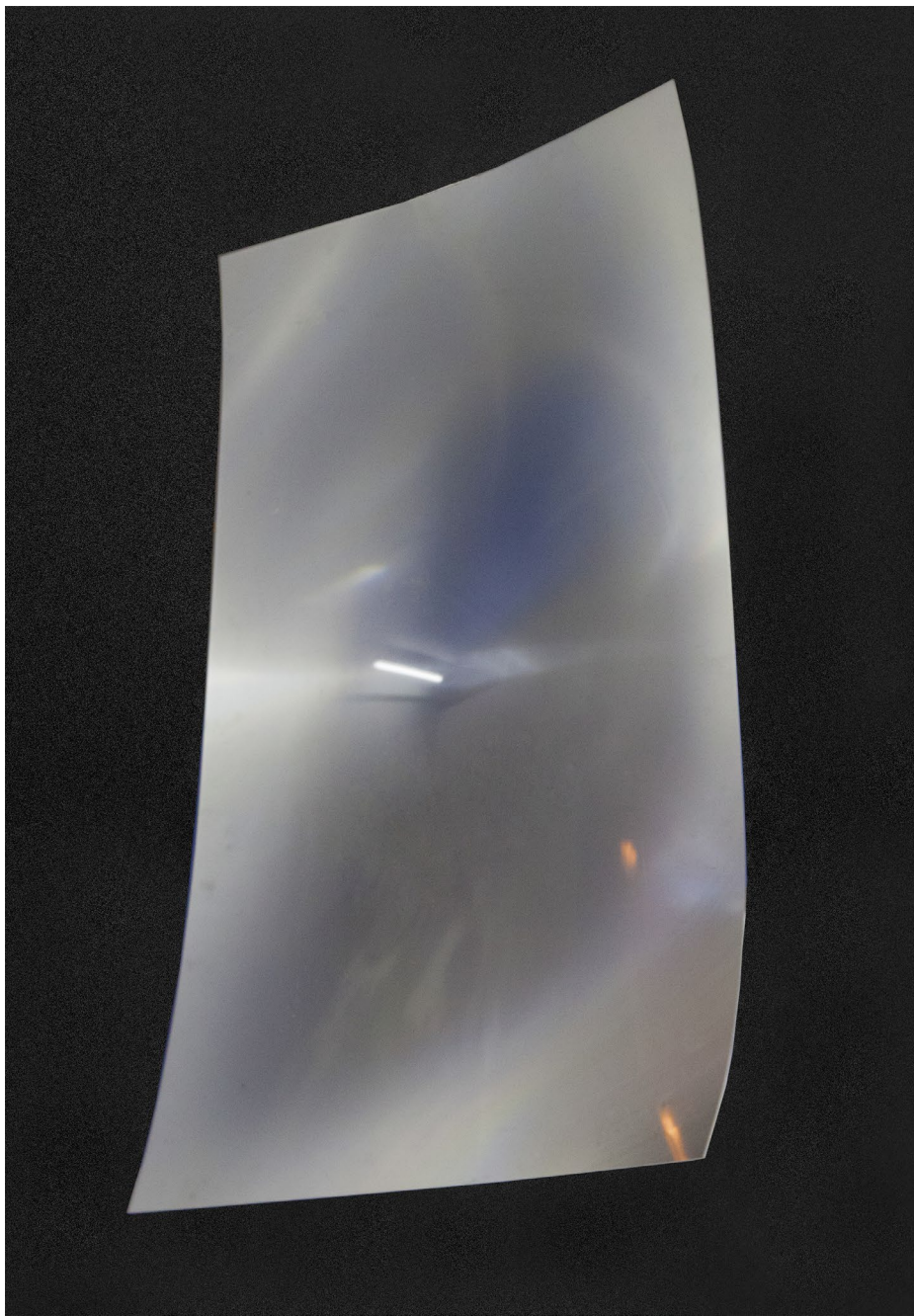
This artwork is a vertical, irregularly shaped piece of polished aluminium. It features a vibrant, multi-colored rainbow-like spectrum of light reflecting off its surface, set against a dark background. The light appears to emanate from the lower right, creating a sense of depth and movement.



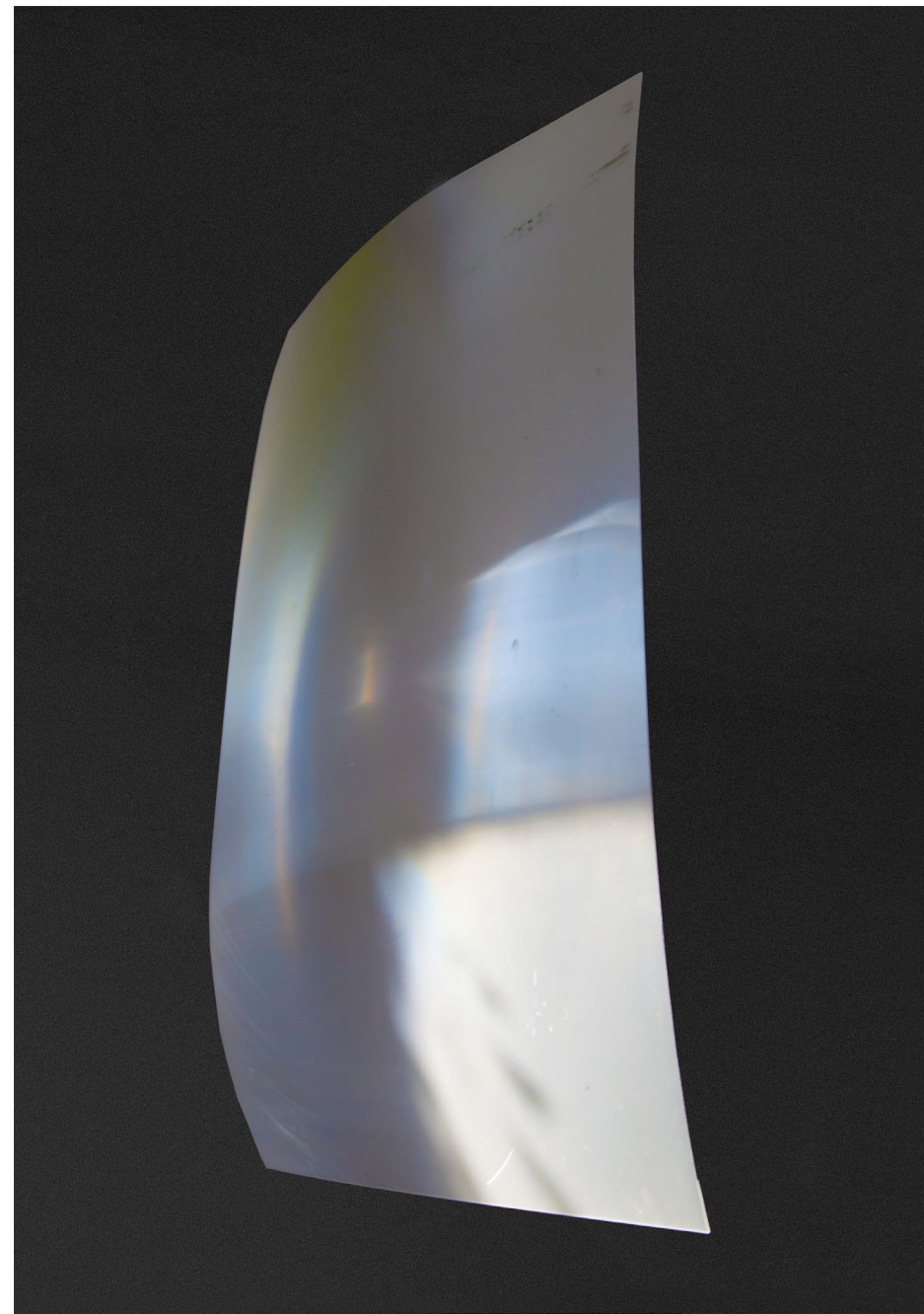
*An Awareness of the Dark II*, 2016  
UV inkjet onto polished aluminium  
65 x 46 cm, Edition of 3 + 2 AP

This artwork is a vertical, irregularly shaped piece of polished aluminium. It features a vibrant, multi-colored rainbow-like spectrum of light reflecting off its surface, set against a dark background. The light appears to emanate from the lower right, creating a sense of depth and movement.





*An Awareness of the Dark III*, 2016  
UV inkjet onto polished aluminium  
65 x 46 cm, Edition of 3 + 2 AP



*An Awareness of the Dark IV*, 2016  
UV inkjet onto polished aluminium  
65 x 46 cm, Edition of 3 + 2 AP

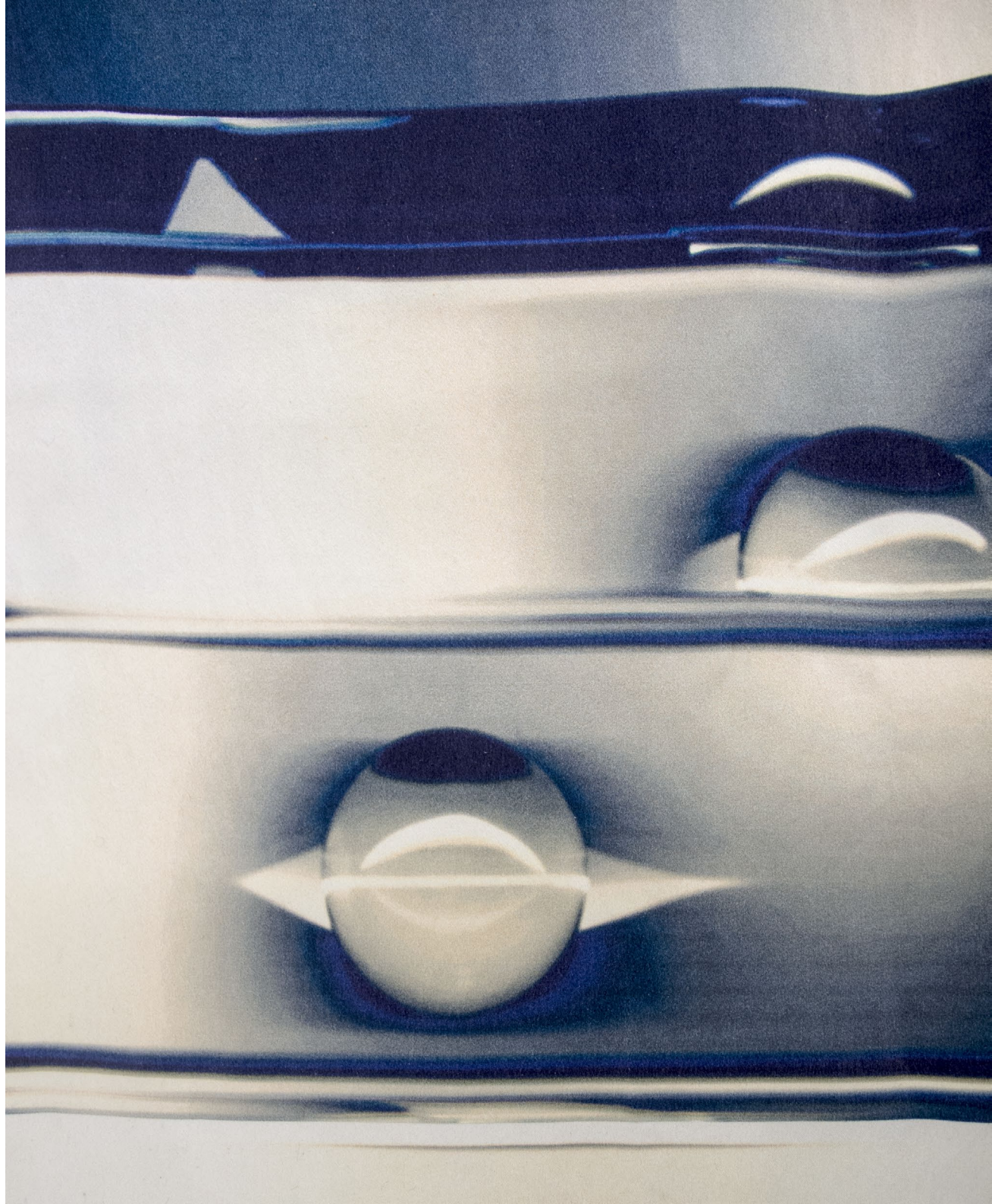




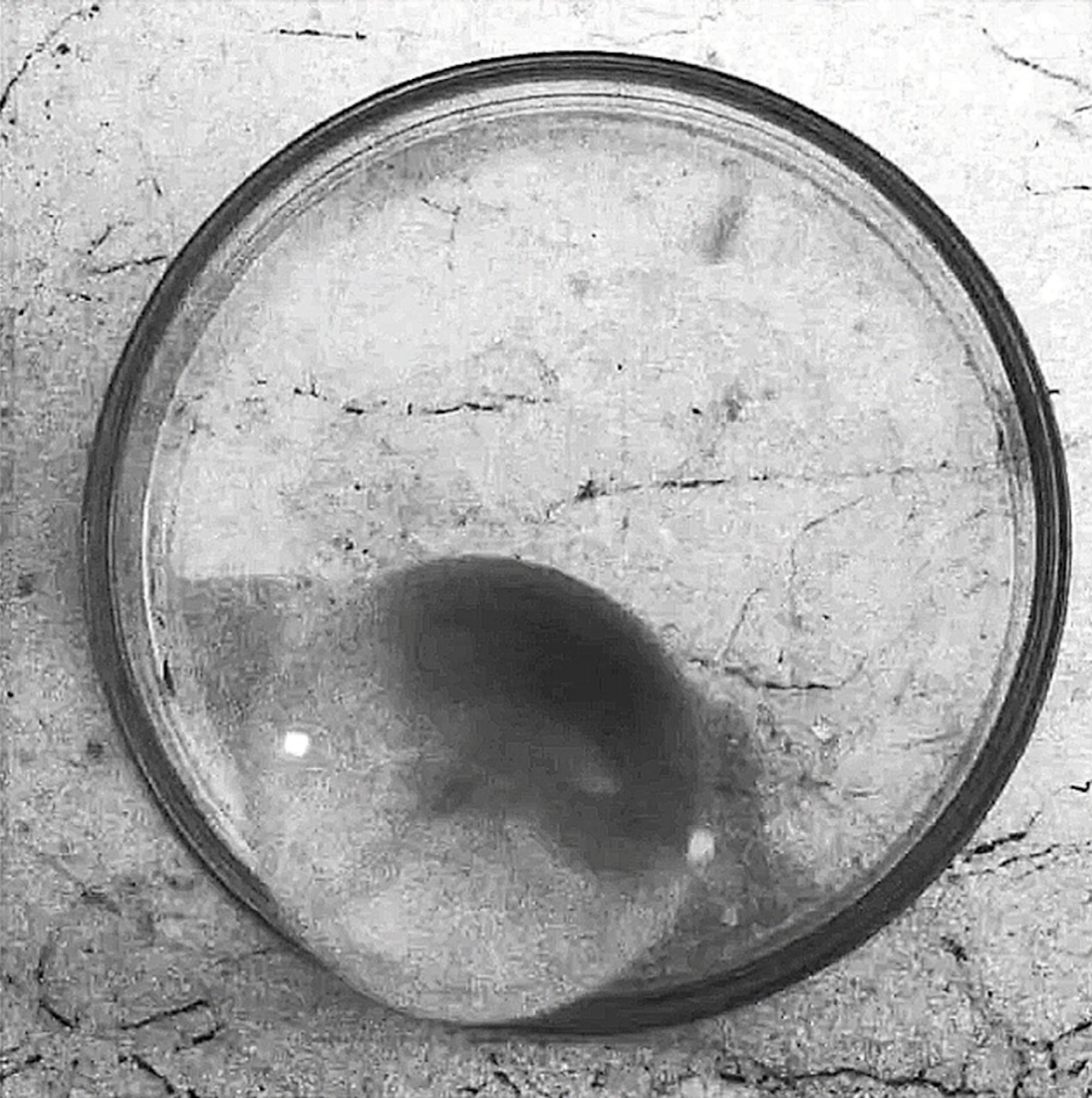
*A Repetition of the Present*, 2016  
Digital print onto silk crepe satin, beech dowel  
650 x 30 cm, Edition of 2 + 2 AP  
Installation View



*A Repetition of the Present*, 2016  
Detail







*Unstoppable Habit*, 2016  
Antique enlarger lens, bespoke beech  
platform, motor, projector, plinth  
Plinth: 55 x 90 cm



## About the Artist

Jessica Rayner is a British artist whose work examines the energy of ‘things’ within nature and the environment. She uses a range of media, including photography, video, printmaking and three-dimensional sculpture, to explore the idea of energy through objects, materials, substances and processes.

Rayner received a BA in Fine Art Painting from the University of Brighton (2007) and an MA in Fine Art Printmaking from the Royal College of Art (2012). She is the co-author of *The Metabolic Landscape: Perception, Practice and Energy Transition*, Black Dog Publishing, London, 2014.

Recent exhibitions include *The Bright Fields*, OBS Gallery, Tunbridge Wells (2015); *Moon Space One*, R1 Reactor Hall, Sweden (2015); *The Metabolic Landscape*, Keele University Gallery and The Parkside Gallery, Birmingham (2014/15); *WINTERREISE*, Christine Park Gallery, London (2015). Rayner has also exhibited at Art Busan, South Korea (2015) and Multiplied Art Fair, Christie’s, London (2012).

## CV

Born in London in 1985. Lives and works in London, UK.

### Education

- 2012** MA in Fine Art Printmaking, Royal College of Art, London, UK  
**2007** BA Hons in Fine Art Painting, University of Brighton, Brighton, UK  
**2004** BTEC Fine Art Painting (Distinction), Wimbledon Art School, Wimbledon, UK

### Selected Exhibitions

- 2015** *WINTERREISE*, Christine Park Gallery, London  
*Moon Space One*, Old Boiler Room, Konsthall C, Moon Space Publishing, Stockholm  
*The Metabolic Landscape*, Keele University Gallery, Staffordshire  
*The Bright Fields*, The OSB Gallery, Tunbridge Wells  
**2014** *The Metabolic Landscape*, The Parkside Gallery, Birmingham  
**2013** *Casual/ties*, Tintype Gallery, London  
*The Round Manual*, Archway Collective, Bermondsey, London  
*Young Gods*, Charlie Smith Gallery, Shoreditch, London  
**2012** *Multiplied*, Christies, South Kensington, London  
*Territory*, Independent Liverpool Biennial, Albert Dock, Liverpool  
*Royal College of Art Degree Show*, Battersea, London  
*The Second Show*, Café Gallery, London  
**2011** *Pop Up Events*, West London  
*Interim Show*, Royal College of Art, London  
*The First Show*, Café Gallery, London  
**2010** *The Artyard*, Richmond, London, (solo project - window display)  
*Field Works I*, Deboeman and Hinselwood Gallery, London  
**2009** The Centre for Recent Drawing, London  
*Field Works I*, Deboeman and Hinselwood Gallery, London  
*Open House*, Wandsworth Open House, London  
**2008** *Natures Bones*, Henrietta Barnett School, London (solo)

- 2007** *Landskips*, Petworth Gallery, Petworth  
*Degree Show*, Brighton Grande Parade, Brighton  
Boundary Gallery, London  
**2006** Brighton Grande Parade, Brighton

### Awards and Residencies

- 2014** KARST Residency  
Skatfell Residency, Iceland  
**2012** Deutsche Bank Award - Finalist  
Nina Steward Award - Finalist  
**2011** David Villiers Award - Royal College of Art Travel Bursary  
**2008** Henrietta Barnett Residency, London  
**2007** Boundary Gallery - Figurative Art Award  
**2004** Young@art - Highly Recommended Award

### Publications

- 2014** *Moon Space One*, Sweden, published by Moon Space Books  
*100 London Artists Volume 2*, Charlie Smith Gallery  
*The Metabolic Landscape: Perception, Practice and the Energy Transition*, Glover, G; Rayner, G; Rayner, J, London, published by Black Dog Publishing  
**2013** *The Round Manual*, Jessica Rayner, Sofie Grevelius, Elizabeth Gossling and Madalina Zaharia, published by Archway Collective  
**2012** *Casual/ties*, a publication by MA Printmaking, RCA in collaboration with MA Critical Writing, RCA  
*23 components of a book*, a publication by MA Printmaking, RCA with contributions from Prof. Jo Stockham and artists Jonathan Allen, Eva Weinmayr and Nigel Rolfe

**OFFICE** Office 3, 12 Carlton House Terrace, the ICA, London SW1Y 5AH

**GALLERY** 35 Riding House Street, London W1W 7EA

**CONTACT** [www.christinepark.net](http://www.christinepark.net) | [info@christinepark.net](mailto:info@christinepark.net)

**IMAGES COURTESY OF** Jessica Rayner and Christine Park Gallery, London

**DESIGN BY** Diane-Laure Souci

**PUBLISHED BY** Christine Park Gallery, London, 2016

**CHRISTINE  
PARK  
GALLERY**